

LEAD-LINED

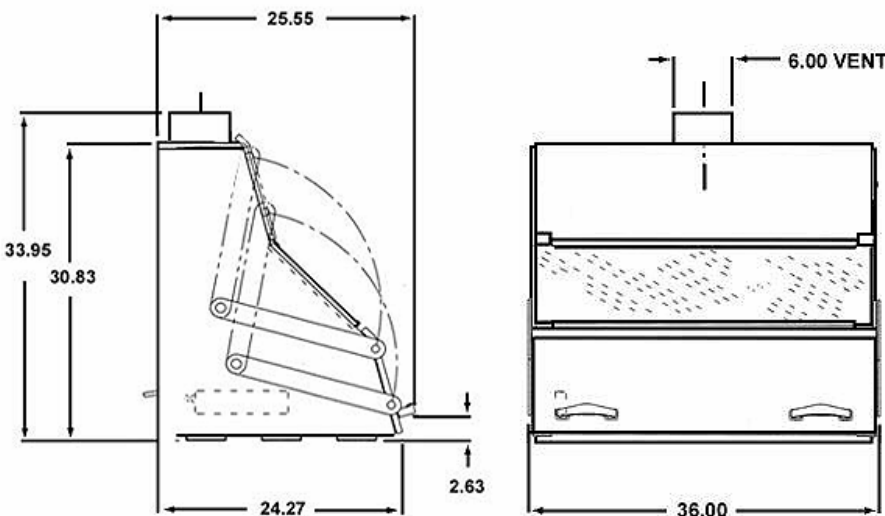
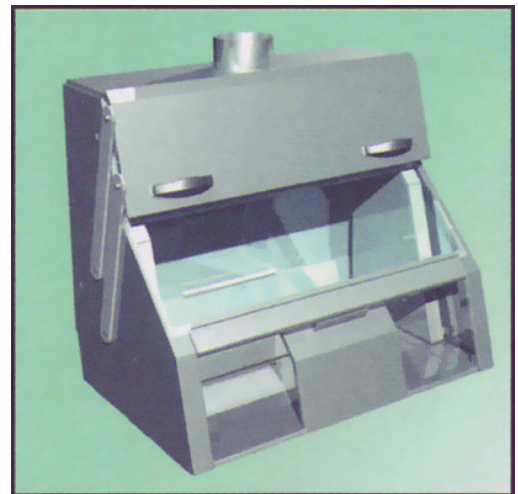
PREPARATION ENCLOSURE

The Lead-Lined Preparation Enclosure is designed for applications that require handling gaseous radioactive materials. The interior provides ample floor space. A large lead glass window and fluorescent light allow safe and unobstructed viewing. The enclosure opening has an adjustable shield that creates access ports. A swing down shield covers the ports when not in use. Gaseous materials are directed by a baffle (eliminating dead space) through a stainless steel chimney. The chimney is connected to external blowers (not supplied) and ductwork (not supplied). The blowers create a negative pressure preventing gas leaks.

SPECIFICATIONS:

- Dimensions:** 36" w x 24" depth x 30.5" h (91.4 x 61 x 77.5 cm)
- Interior Floor Space:** 31" w x 19" depth (78.7 x 48.3 cm)
- Lead Shielding:** .25" thick (.64 cm)
- Adjustable Shield:** 12" w x 10" h x .5" thick (30.5 x 25.4 x 1.3 cm)
- Exhaust:** 6" dia (15.2 cm) chimney, fixed upper and adjustable lower baffles. Blower and filter not included
- Lighting:** 110V fluorescent lamp, 20 watts, UL listed, 220V available on request
- Lead Glass Window:**
 - Dimensions:** 34.5" w x 11.8" h x .75" thick (87.6 x 30 x 1.9 cm)
 - Density:** 5.05 g/cm³
- Finish:** # 3 brushed, stainless steel
- Weight:** 582 lb (264 kg)

244-007 Preparation Enclosure, .25" lead\$15,000.00



A negative air flow of 125 FPM face velocity is recommended. CFM = 180

	Air Volume, CFM	Negative Static Pressure, "H ₂ O	Inlet Air Velocity, FPM
Measurement Results Vented from the bottom	120	0.041	
	140	0.055	120
	160	0.073	
	180	0.092	160
	200	0.111	
	220	0.136	190
	240	0.161	

Prices subject to change without notice.

www.jgravengaard.com 2009-05-11

J. Gravengaard Corporation

PO Box 20171 Portland, Oregon 97294 Nationwide (800)796-SCAN

Medical Imaging Sales & Service

Local (503)255-0535 Fax (503)255-7047

LEAD-LINED

PREPERATION ENCLOSURE BASE CABINET

This Cabinet is designed to support the Lead-Lined Preparation Enclosure (244-007). Full height, overlapping double doors with key locks open to an adjustable shelf with a 100 lb capacity. The cabinet may be used for decay and storage.

SPECIFICATIONS:

Dimensions: 36.5" w x 24" d x 36.5" h
(92.7 x 61 x 92.7 cm)

Lead Shielding: .25" (.64 cm), .5" (1.3 cm) or
1" (2.5 cm) thick on all six sides

Shelf Dimensions: 30" w x 18" depth
(76.2 x 45.72 cm), 100 lb (45.4 kg)
capacity, adjustable height

Doors: Key-locked

Countertop: Stainless steel with 4" backsplash and .5" spill-proof lip

Finish: Durable powder-coat paint

Weight:

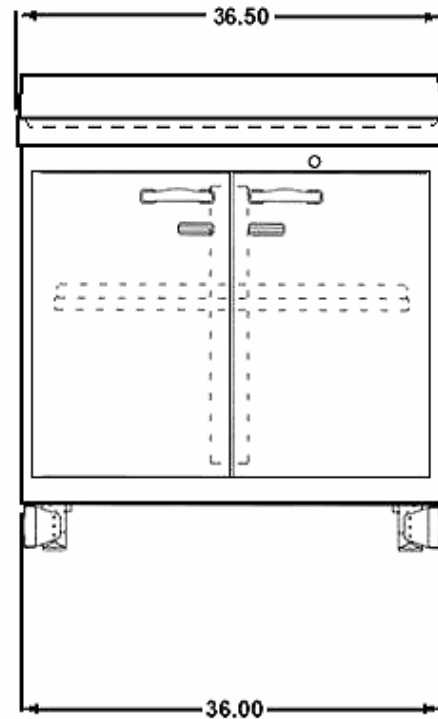
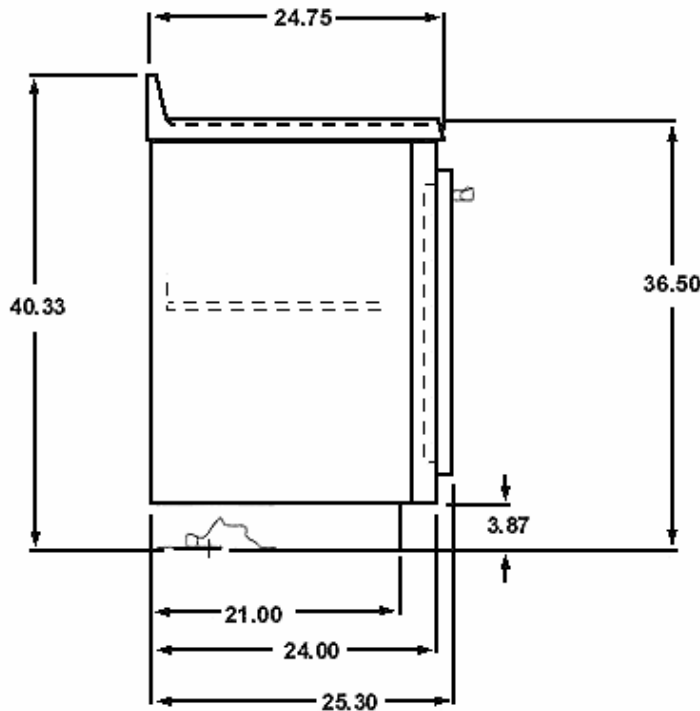
244-190: 812 lb (368 kg)

244-191: 1407 lb (638 kg)

244-192: 2600 lb (1179 kg)



- 244-190** Cabinet, Preparation Enclosure Base, .25" lead \$10,200.00
- 244-191** Cabinet, Preparation Enclosure Base, .5" lead \$11,700.00
- 244-192** Cabinet, Preparation Enclosure Base, 1" lead \$14,500.00



Prices subject to change without notice.

www.jgravengard.com 2009-05-11

J. Gravengard Corporation

Medical Imaging Sales & Service

PO Box 20171 Portland, Oregon 97294

Nationwide (800)796-SCAN

Local (503)255-0535

Fax (503)255-7047